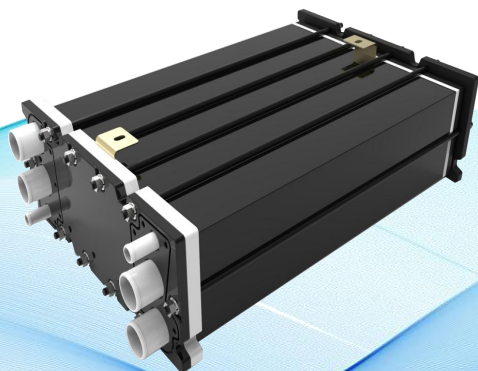


FY06S-80kW Battery Stack



Project	Parameter
Rated power(kW;@0.65V)	80kW
Rated voltage (V)	136V
Consistency (mV)	Range (maximum single chip pressure - minimum single chip pressure) \leq 35mV
Overall dimensions (length x width x height; mm)	532*457*182
Cathode/anode metering ratio	Anode: 1.4-1.7; Cathode: 1.8-2.2
Medium pressure (kPaC)	Anode: 30-170, equal to or higher than the cathode within 20kPa; Cathode: 30-150
Coolant temperature (°C)	The coolant enters the reactor at 30-80 ° C. The temperature difference between the inlet and outlet is within 12 ° C, and it can operate at lower temperatures
Medium humidity(RH)	Anode/cathode: 10% -100%; Stable operation under dry gas conditions
Three cavity flow resistance (kPa)	Anode \leq 25, cathode \leq 50; Cooling liquid \leq 55
Vibration resistance/impact resistance	Better than the requirements of GB/T 33978-201733928-2018
Cold start performance	-30 ° C without external assistance



High performance

Fast startup speed and short response time



Independently developed and designed

Customized design and development based on customer needs



Accurate and controllable

Good environmental adaptability